

©2010 Google, Imagery ©2010 DigitalGlobe, GeoEye, Terra\* & Bluesky, GeoEye, GeoMapping, plc, Map data ©2010 Tele Atlas

- Boundary
- public conveniences
- ▨ fenced children's play area
- ▨ commonly used performance area
- ▨ low level wall with benches. Please note other benches exist into park
- primary + most well used points of access, although boundary to Mill Road + Crane Bridge Road is open + unrestricted
- vehicle barrier

Search

Maps

Videos

KnowHow

Reviews

Share

Feedback

Advertise

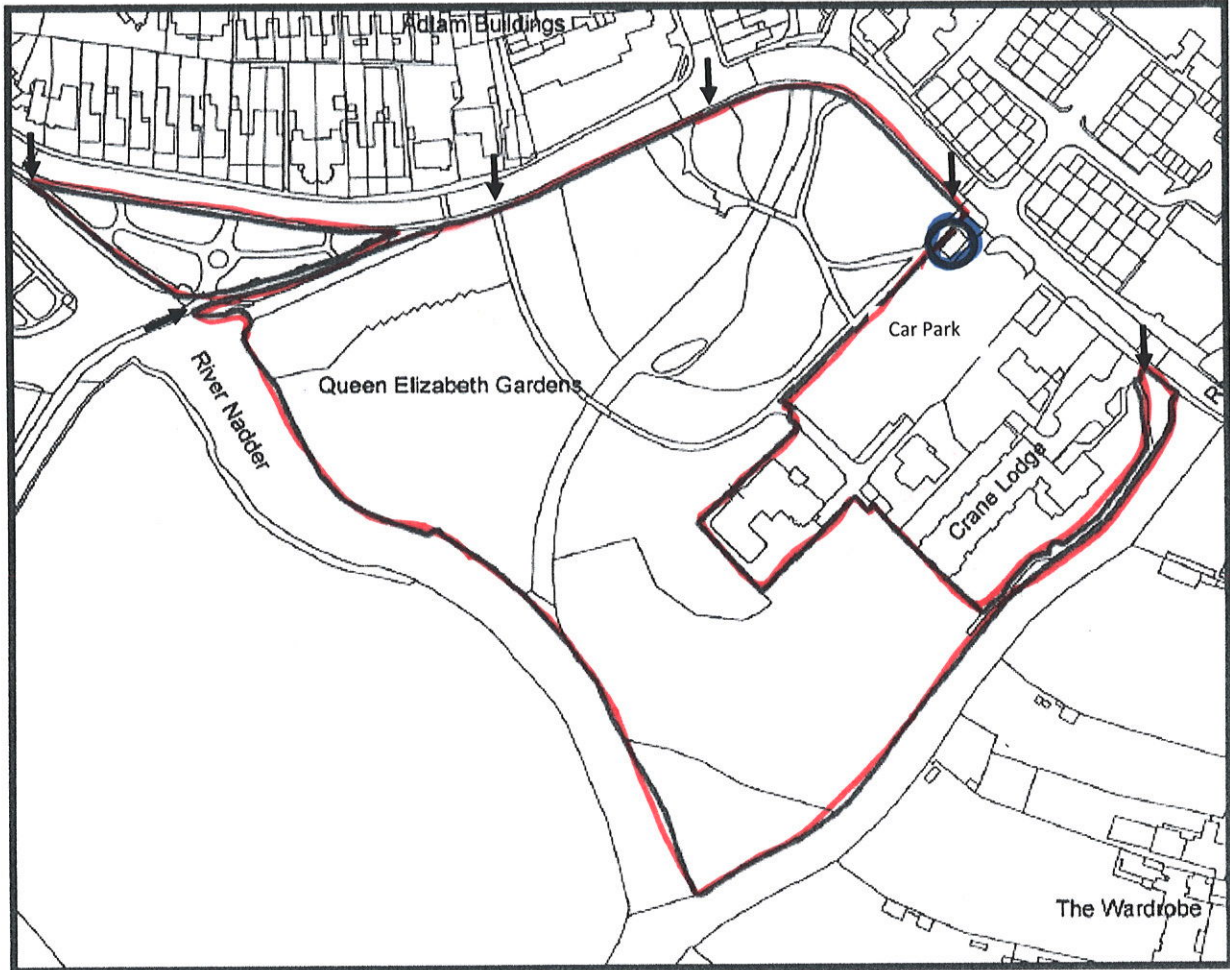
I'm looking for crane bridge road

in this map

Search



## Plan map of Queen Elizabeth Gardens



Scale 1:2500

Boundaries highlighted in red.

Additional notes:

The public conveniences adjacent to the park are circled in blue.

The primary and most well-used points of access and egress to and from the park have been indicated with arrows, although please note that the park's boundary with Cranebridge Road/Mill Road is an open and unrestricted one.

As indicated, Lush House Car Park is located next to the park.

**COPY**

